

**SORTED! e-newsletter**  
**November 2020**

---

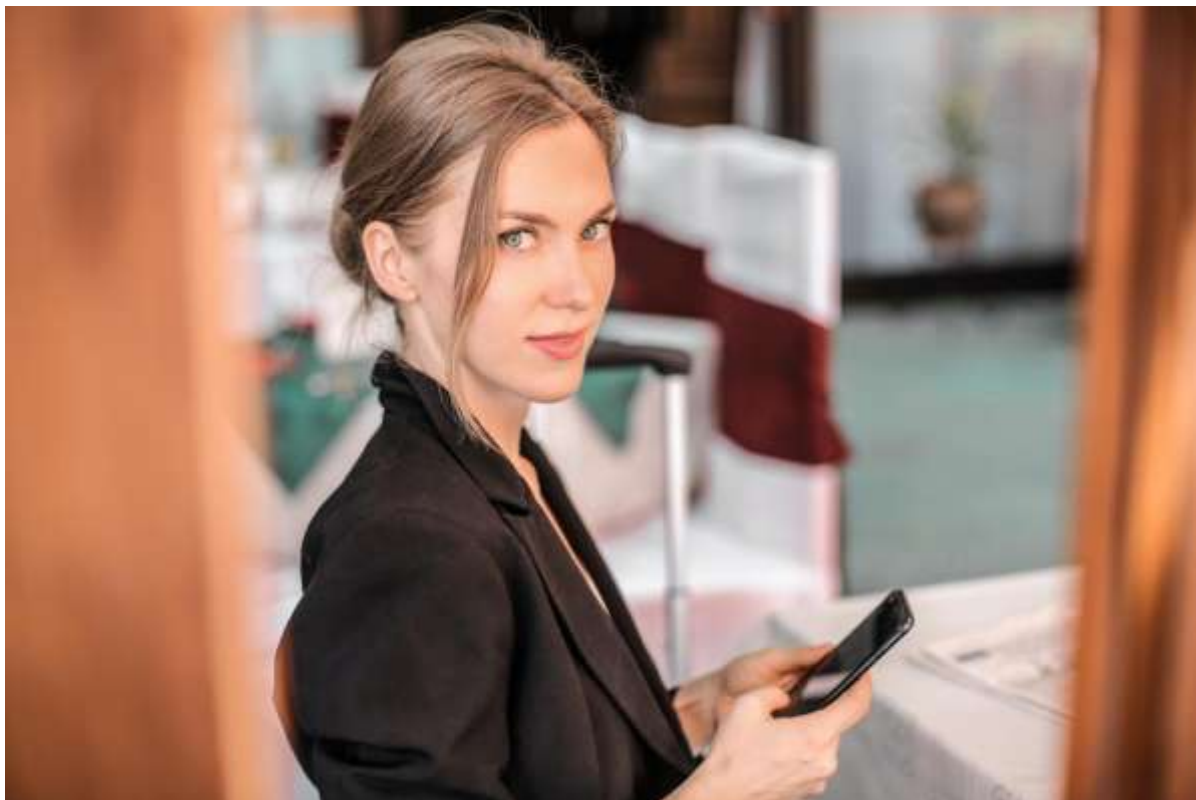
**Bin day  
already?**



**Welcome to the latest SORTED! for November 2020**

As well as the easiest way to check all your collection dates and do much more online fuss-free 24/7, this month we have ...

- What's happening waste-wise in the COVID-19 lockdown
  - Latest on the successful Recycle More roll-out in Mendip
  - Buying better during Black Friday and Santa shopping
  - ... and grab a garden bargain ahead of 2021 grow-your-own
  - Dodge Wastemas, avoid Christmess, with our simple tips
  - All your festive day changes - make a note now
-



### Get it done 24/7 - no fuss or bother

With new services rolling out across Somerset, there is a fuss-free way to manage many essential tasks: use the My Waste Services pull-down menu at [somersetwaste.gov.uk](https://somersetwaste.gov.uk). Rather than time spent on emails or phone calls, you can swiftly check all your collection dates, order free recycling boxes, food waste bins and kitchen caddies (plus Bright Blue Bags in Mendip), arrange paid-for bulky waste collections, buy garden waste sacks and request garden sack collections, and report missed collections after 7pm on the due day. Check it out now.

*Who do you know who needs My Waste Services? Forward them SORTED! and suggest they sign up by scrolling to the end of the page at [somersetwaste.gov.uk](https://somersetwaste.gov.uk).*



## COVID-19: All sites open, all services working, all safety measures

Somerset Waste Partnership plans to keep the county's recycling sites open and maintain all services during the second COVID national lockdown.

As things stand, all 16 sites are expected to stay open on standard winter hours (open sites operate 9am-5pm weekdays, all 16 sites 9am-4pm weekends). Current safety measures will remain in place.

With infections rising nationally and locally, SWP is also reminding people of Government guidance on how to dispose of waste if you have COVID symptoms or live in a household with someone who does.

Personal waste, such as tissues, facemasks and disposable cleaning cloths should be double-bagged in disposable rubbish bags and kept separate from other waste in the home for 72 hours.

It should then go into your rubbish bin outside your home and will be picked up in the usual rubbish collections.

All residents are asked to maintain a social distance from collection crews and wash and disinfect container handles before and after putting out recycling boxes and bins.

Near the end of the lockdown earlier this year, Government guidance clarified that visits to recycling sites are considered "permitted journeys".

Somerset's sites, which are operated by SWP's contractor Viridor, already have measures in place to protect the public and staff. These will continue and include:

- No one with COVID symptoms or those asked to shield should visit sites
- Strict social distancing must be followed
- Visitors are asked to wear gloves
- Maximum of two per vehicle from the same household

Masks are discretionary and site staff are not able to give their usual assistance in lifting heavy or large items.

The Reuse Shop at Taunton Recycling Centre will be closed during the lockdown.

For more on all recycling sites, check [somersetwaste.gov.uk/recycling/centres](https://somersetwaste.gov.uk/recycling/centres).

*Who needs to know the COVID safety measures? Forward them SORTED! and suggest they sign up by going to the end of the page at [somersetwaste.gov.uk](https://somersetwaste.gov.uk).*

---



## Flying start for Recycle More

A new era in recycling is underway in Mendip, blazing a trail for other parts of Somerset next year.

Somerset Waste Partnership (SWP) is thanking residents across Mendip for getting Recycle More off to a flying start.

Around 53,000 homes are now having their new expanded collections, with far more being collected each week, especially plastic pots, tubs and trays.

That means millions of extra items rescued from the rubbish each year, protecting our environment and being turned into new products and packaging.

Mendip is the only part of the county having Recycle More introduced this year. The service is being rolled-out in four stages over 18 months, so depots can be upgraded one-by-one to handle the extra recycling.

Recycle More is due in South Somerset at the end of June/early July 2021, and the rest of the county by late February/early March 2022, though dates could be subject to change.

SWP Managing Director Mickey Green said: "Mendip residents have done a great job in getting behind Recycle More and so have the crews. It's good to see and bodes well for the rest of the county.

"We have to do this in stages and it's really important that everyone outside of Mendip carries on recycling as they do now until the new service reaches their area."

Recycle More means materials collected from the kerbside every week; plastic pots, tubs and trays; cartons/Tetra Paks, household batteries and small electrical items.

Residents are given a new recycling container – a Bright Blue Bag – and need to put different items in their recycling boxes. More recycling means less rubbish, so this is collected every three weeks instead of every two.

As well as protecting the environment and helping tackle climate change, it saves £2m a year that can go on other vital local services.

For all details of Recycle More, see [somersetwaste.gov.uk/recycle-more](https://somersetwaste.gov.uk/recycle-more).

*Who needs to know Recycle More is coming soon? Forward them SORTED! and suggest they sign up by going to the end of the page at [somersetwaste.gov.uk](https://somersetwaste.gov.uk).*

---



### **Black Friday? Shopping for Santa? Think outside the box**

With the latest lockdown closing all but essential shops, Somerset Waste Partnership is encouraging festive shoppers and Black Friday buyers to think laterally this year.

More online shopping means tonnes more cardboard packaging. It can be recycled, but producing it and collecting it have a financial and carbon cost - not to mention putting a major strain on our collection crews.

When going online for gifts, why not consider gifts that don't come in cardboard boxes with masses of unrecyclable plastic?

- Vouchers for visitor attractions, shops or experiences
- Digital subscriptions to newspapers, magazines or streaming services
- Memberships for trusts or clubs that give you free days out

As well as stemming tide of cardboard, these will give loved ones something to look forward to in 2021.

Whether it is a meal out, a day out, or a pampering treatment, you can also "shop local" for many of these things, helping support our hard-pressed businesses in these tough times.

Be sure to think about shopping locally when ordering anything online. It's not just the big national or international retailers who can deliver to your door and you may find local companies keep the cardboard to a minimum.

If you end up with a big load of cardboard, or any festive waste, remember our 16 recycling sites.

Except for three days - Christmas, Boxing and New Year - all are open on their usual hours.



### **... and grab yourself a garden bargain**

As autumn leaves fall and in good time for Christmas, grab a bargain composting bin for as little as £10 with our special offer of a 220-litre for £10 and 330L for £12.50. Save again with the buy-one-get-one-half-price deal for two of the same size. Save once more by buying two and then sharing the delivery of £9.99 per order with a neighbour or friend? Buy your bins now at [getcomposting.com](http://getcomposting.com).

*Who would like this offer? Forward them SORTED! and suggest they sign up by scrolling down to the end of the page at [somersetwaste.gov.uk](http://somersetwaste.gov.uk).*

---



## Take control this Christmas

Despite this year's troubled times, simple steps can deliver a wonderful Christmas and New Year of family fun, far less waste and easy savings.

But fail to plan, and you could be looking at a festive Wastemas or Christmess.

From food to gifts and decorations, follow the reduce-reuse-recycle path to stop waste before it starts, make the best of all you have, and let less go in the rubbish.

For the best festive food, make sure you buy what you need and eat all you buy with a meal plan for the holidays, checking your stocks before shopping, eating into the freezer and fridge first to make space, then using up those lovely leftovers.

For great gifts, demand wish lists, invest in presents of real quality that last and are valued, look to give digital subscriptions, and use real paper wrapping - not plastic or metallic - that can actually be recycled.

Winter foliage and decorations of paper and card - especially home-made - beat plastic any day, as does a real tree unless your false one lasts for many years, and baubles that recycle anything from buttons to old family photos.

After the celebrations, reuse and recycle all you can. Confirm what goes kerbside in your area, and check collection dates at My Collection Day at [somersetwaste.gov.uk](https://www.somersetwaste.gov.uk).

Got a lot? Drop all your recycling and rubbish off at a recycling site; except for three days - Christmas, Boxing and New Year - all are open on their usual hours.

Any food that cannot stay in the fridge or freezer can go in the food waste bin - or, if suitable, in your compost bin.

Save cards - to make gift tags - and wrapping, ribbons and decorations for next year.

If not in your compost bin or garden wildlife corner, Christmas trees must be taken to any recycling site or - if you subscribe - put out with your garden waste collection.

For any recycling container, go to the Managing Waste Containers tab on My Waste Services at [somersetwaste.gov.uk](http://somersetwaste.gov.uk). Report missed collections with My Waste Services.

PS: If the weather gets severe, check our [website](#) and Somersetwaste on [Facebook](#) or [Twitter](#).

---

## Christmas and New Year 2020/21

<b>Usual collection day</b>	<b>Revised collection day</b>
Thu 24 Dec	No change
Fri 25 Dec	Mon 28 Dec
Mon 28 Dec	Tue 29 Dec
Tue 29 Dec	Wed 30 Dec
Wed 30 Dec	Thu 31 Dec
Thu 31 Dec	<b>Sat 2 Jan</b>
Fri 1 Jan	Mon 4 Jan
Mon 4 Jan	Tue 5 Jan
Tue 5 Jan	Wed 6 Jan
Wed 6 Jan	Thu 7 Jan
Thu 7 Jan	Fri 8 Jan
Fri 8 Jan	<b>Sat 9 Jan</b>
Mon 11 Jan	Usual collections resume

### Your festive collection day changes - make a note now!

Check your collection dates with My Collection Day at [somersetwaste.gov.uk](http://somersetwaste.gov.uk).

No garden waste collections Friday 25 December to Friday 8 January (inclusive). Friday 8 January collections will take place on Saturday 9 January; usual garden waste collections resume from Monday 11 January.

Recycling options for your decoration-free real Christmas tree: home compost, add to your garden's wild corner or take to recycling site; garden waste subscribers can add it to a collection.

*Who needs the Christmas and New Year dates? Forward them SORTED! and suggest they sign up by scrolling to the end of the page at [somersetwaste.gov.uk](http://somersetwaste.gov.uk).*

---





**Next month:** Christmas and New Year special - helpful simple tips on food and drink, gifts and decorations, what to do about your tree and easy advice on planning for 2021, including grow-your-own and next steps in Recycle More.

*PS: Do forward SORTED! to all your contacts, and suggest they sign up by scrolling down to the end of the page at [somersetwaste.gov.uk](https://www.somersetwaste.gov.uk).*